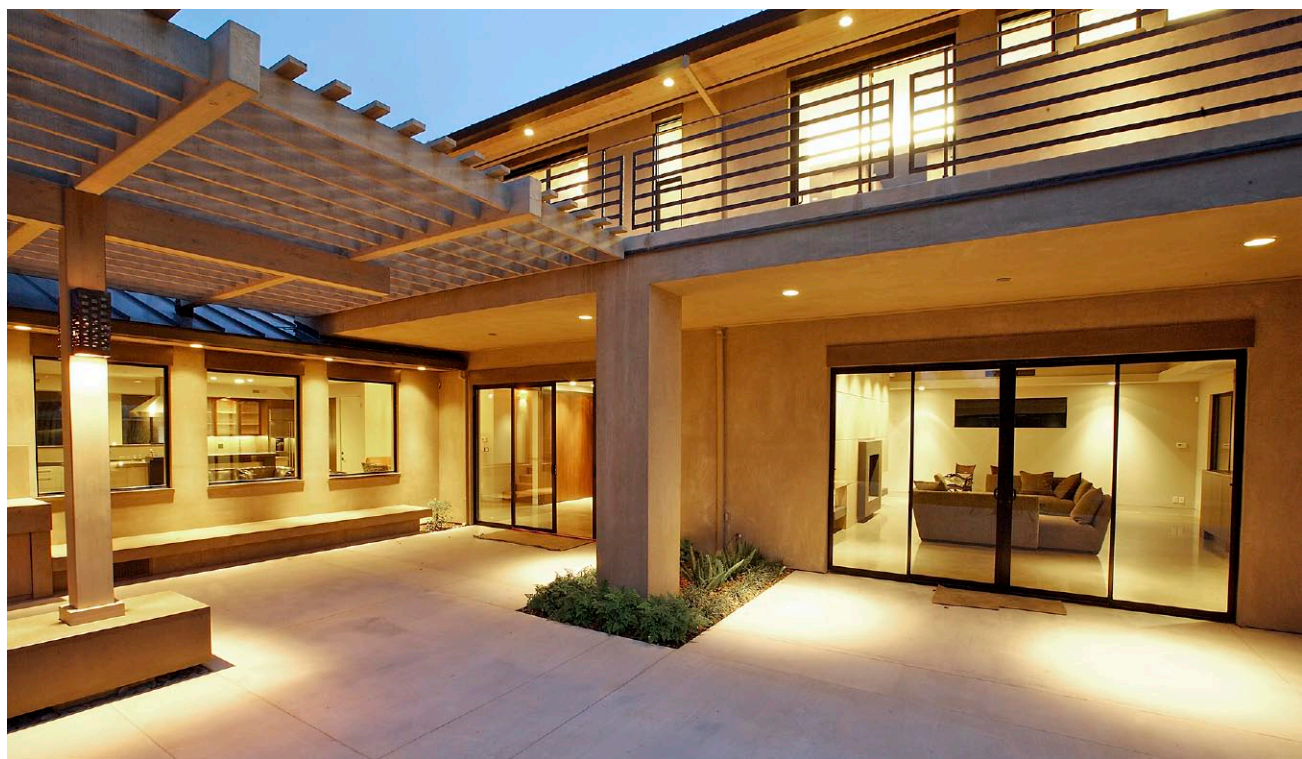


Project Profile



1013 Enslin Ave., Modesto, Calif.

Contractor: Flying Turtle Cast Concrete

by Christina Camara

Like an artist painting on a blank canvas, Mat Rogers of Flying Turtle Cast Concrete has created a showcase home that demonstrates his experience in design and his ability to use concrete in unexpected ways.

After two years of work, the spectacular result — his own home, at 1013 Enslin Ave. in Modesto, Calif. — is a two-floor, 4,400-square-foot showplace that cost about \$1.3 million to create over a 1,700-square-foot home that had been largely torn down. Decorative concrete plays a starring role indoors and out. It's featured not only in concrete floors, countertops, sinks and fireplace surrounds, but also in three tables

and the bed frame and end tables in the master bedroom.

"It was an opportunity to come full circle and integrate all the ideas and skills I had learned and honed with concrete over the last 10 years," Rogers says.

Rogers had worked as a design-build contractor for a dozen years prior to founding Modesto-based Flying Turtle. His aim at the Enslin house was to show that concrete could look modern, yet warm and inviting at the same time. Architects and designers who have toured the home don't even realize some of his creations are made of concrete, he says.



Photos by Matthew J. Visser



"The front view of the house is quite stunning," he says. "The color palette is subtle, and the combination of the stone, the stucco walls, and knotty cedar eaves give the steep stone buttress design a welcoming warmth."

Exterior concrete at the home includes an in-ground pool, large patio and outdoor shower. Three large second-story decks are outfitted with hand-forged metal rails. Integrated concrete planters and a floating bench can be found in the backyard. The pool deck was detailed without the use of rounded joint cutters. "We ended up with an effect of a smooth carpet," Rogers says. "We poured 2-foot strips of concrete, left the edge sharp and poured against that, infilled the grid and then went back with the saw blade. So it's not a deep cut — it's a more refined and smooth look."

Concrete throughout

Other features of the house incorporated decorative concrete as well.

Living room/dining room fireplace and coffee table:

The double fireplace was one of the most challenging projects in the entire house. The dining room side is an artistic mixture of concrete, walnut columns and glass panels. The living room side is simpler, with large square grids of concrete



SINCE 1986



**WOC Booths
S11239 &
040861**

ULTRA SURFACE® PRODUCTS

PRODUCTS • TRAINING • SUPPORT

Since 1986, manufacturer of superior concrete surface restoration & beautification products for thin overlays, 1/4" Stamping, Acid Stain, Color Flake, Spray-Top, Concrete Resurfacing, Epoxy & Urethane Coatings and Concrete Countertops. **VISIT** www.concretesolutions.com

HIGH PERFORMANCE, QUALITY PRODUCTS
Stamping Tools, Stamps and Borders, Color Dye, Acid Stains, and Color Flakes. Training Workshops & Technical Support

	
REPAIR	RESURFACE
	
<small>Cracks and Spalled Areas</small>	<small>1/16" to 1/8" Feather to Zero</small>
SPRAY-TEXTURE	1/4" STAMPING
	
<small>Spray-Trowel Knockdown Finish</small>	<small>DECORATIVE CONCRETE SOLUTIONS</small>
COLOR FLAKE	SPRAY-TOP®
	
<small>THE ASHBY PROCESS</small>	<small>30 COLORS</small>
COUNTERTOPS	ACID STAIN
	
CONCRETE DYE	
	
	<small>30 COLORS</small>
	

TRAINING CLASS WORKSHOPS MONTHLY
at our Training Facility in Las Vegas, Nevada
See 2009 Schedule at www.concretesolutions.com

**SUPERIOR CONCRETE SURFACE RESTORATION
AND BEAUTIFICATION PRODUCTS**

Toll Free: (800) 232-8311
www.concretesolutions.com



Photo by Matthew J. Visser



CONCRETE TEXTURING TOOL & SUPPLY

Good People • Fair Prices
• Excellent Service

Massive inventory of decorative concrete
tools, products and materials.

For all your concrete needs visit us at:
www.concrete-texturing.com



PH: 1-888-824-2383 • FX: 1-888-824-2353
Same Day Order/Ship • Custom Blended Pigments
WE SHIP ANYWHERE!

surrounding a black frame around the firebox. Visitors can enjoy the fire and put their feet up on a glass-topped, cast-concrete coffee table, which was ground to reveal sand and fossils. The coffee table features two panels that appear to be falling away from each other in a V shape, connected by an antique chain embedded in the slabs.

Kitchen: The concrete island features a band of walnut color, which was made by leaning the mold and pouring black, then walnut brown, then more black concrete into it, letting it set up for about half hour between pours. Rogers says the three different layers gave him the depth of color he was looking for.

Once the slab came out of the mold, he used a diamond grinder to expose sand and add an extra layer of interest. Two inlaid fossils were glued into the mold at the color shift between brown and black.

The island appears to be floating, and it's one of the many "wow" attractions in the home.

Rogers also made a breakfast buffet table in a Frank Lloyd Wright style, integrating concrete and solid walnut planks.

Dining-room wet bar: Rogers says the bar was designed to be a bit playful. It's the only curve in the house. Behind the dark concrete countertop with integral sink are two large, convex concrete panels the color of burgundy wine, intended to suggest to visitors the feeling of looking into a barrel of wine. Three different coloring techniques were used — an integral color, an aniline dye and an acid stain — creating a

Installs with Paver on Sand or Concrete

NEW PRODUCT
FOR 2009

We are pleased to introduce the Adjustable Height Paver Drain. This drain is a dual-elevation deck drain system used for installation of paver decks. This unique design features a top cap that can be lapped past the joints for rigidity, as well as, a tray built into the base to set the pavers on.

STEGMEIER'S Adjustable Height Paver Drain

Patented - Stegmeier, LLC

America's #1 manufacturer of Deck Drains and Vertical Forming Systems for Decorative Concrete since 1968.

Visit our new web site with product CAD drawing, training videos and technical information at www.stegmeier.com.

STEGMEIER
LLC



Since 1968

SEE US AT WOC
BOOTH # S11651
FEB. 3-6 IN LAS VEGAS



800-382-5430 - Customer Service
800-356-3602 - Toll-free Fax



Photos by Matthew J. Visser

Flying Turtle Cast Concrete installed decorative concrete upstairs and down, indoors and out, in its showcase home, even in the bathrooms.



Excel-Coat®

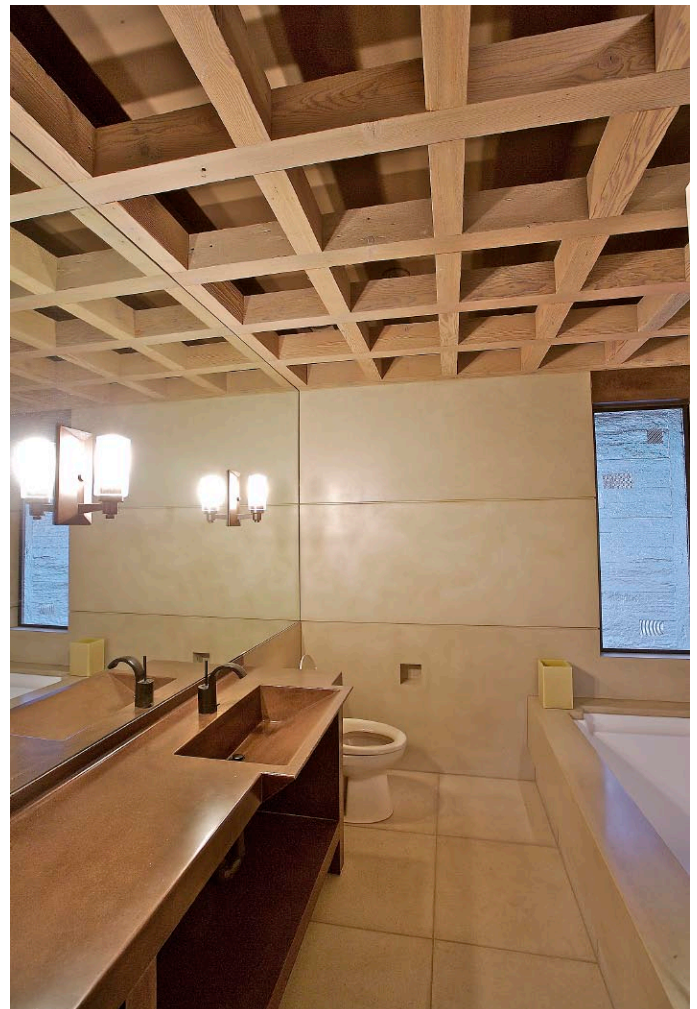
- Maximum Protection
- Proven Durability
- Lasting Beauty

Manufacturers of:

- Toppings
- Overlays
- Resurfacers
- Sealers
- Waterproofing

Visit Us At World Of Concrete:
Booth #S12008

800.473.3817
www.excellentcoatings.com





deep, intense color that is brighter in the middle and muted at the outer edges.

Lower bath: The bathroom features wall panels of tan concrete that support a grid of 4-by-6 sandblasted fir timbers. The beige colors contrast with the wood tones in the concrete sink and backsplash.

Master bathroom: The fireplace, which incorporates concrete, walnut and metal, includes two metal band inlays that align with the walnut shelving and remind Rogers of a railroad track, an image that is reinforced when he hears trains go by at night.

The team at Flying Turtle used several forms of concrete throughout the house, including concrete and wire mesh in most of the wall panels, straight concrete for smaller countertops, such as those in the bathrooms, and glass-fiber reinforced concrete for some larger countertops. The large living room-dining room fireplace is a combination of straight concrete and GFRC pieces. The team occasionally troweled fiber





Project Profile



WOC Booth
S13005

IT'S ALL ABOUT VERSATILITY

Finding a truly versatile product to meet performance, job requirements and cost targets, can be challenging in today's competitive environment. With **DRYLOK Masonry Waterproofing System**, you'll avoid disappointments, create customer loyalty and best of all you'll earn higher profits with no call backs.

The DRYLOK Advantage

DRYLOK is the #1 Rated Masonry Waterproof. For over 50 years it's recognized as the leader in the masonry waterproofing industry. DRYLOK is "Guaranteed to Stop Water" and comes with a fully transferable warranty. Use DRYLOK as the first step to a complete remodel or a finish coat for a waterproof and decorative surface. DRYLOK comes in blue, beige, gray and white and can be tinted for custom coloring. Application is easy with brush, roller or spray gun.

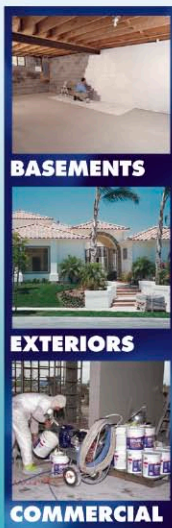
Backed by Independent Testing

All formulas of DRYLOK – Powder, Oil, Latex and Extreme – are independently tested to back their claims. All are tested to industry standards set forth by governing bodies and on materials that are industry approved to the highest capacity.*

FULLY TRANSFERABLE
10
YEAR WARRANTY

STOPS A WALL OF WATER 22 FT. HIGH
22/10
RESISTS TO PSI

BY A LEADING CONSUMER PUBLICATION
#1
RATED



*DL Labs, 2008

For more information
or to find a dealer near you call
1-800-272-3235 or visit us at
www.ugl.com.



Photo by Matthew J. Visser

into the back mix of concrete pieces for extra reinforcement.

"We use pea gravel in our face mix so we don't lose the look of concrete," Rogers notes. "We just like the depth and textural color variation aggregate helps to provide."

While designing and building the house, Rogers learned that mixing stone with concrete was a money saver for exteriors. The stonework in front looks very high-end, and the job was far less expensive than doing it completely in concrete would have been. He also

learned to ask other experts. "It's always a good idea to have your ideas critiqued and reviewed by design professionals and friends," he says. "I made some excellent adjustments based on outside input."

Opening the house for tours has generated a lot of business for Flying Turtle. It's also on the market, for \$1.795 million. Rogers admits he'll miss it. However, he says, he's already moving on. "I'm looking forward to doing the next one!" 📱

🌐 www.flyingturtlecastconcrete.com



Photo by Annie DeLong

SD77 77" of Grinding Width



Made in
USA

- 77" grinding width
- 36 diamonds
- 8,000 sq ft/hr/cut
- Catalytic muffler
- Wet or dry operation

Eagle Solutions - 770.773.3875

VP300 Propane Vacuum

Made in
USA

Exclusive



- **NO CORDS**
- 9 gallon collection capacity
- 28 sq ft primary filter
- No dents or rusting
- Safe, industrial design

Eagle Solutions - 770.773.3875

FREE Concrete Polishing Training



- Locations across the U.S.
- www.eaglefloorsolutions.com for details - help us decide this year's schedule
- Try gear & chemicals from various manufacturers

Eagle Solutions - 770.773.3875



Now Available

*Burnisher designed exclusively for the
concrete polishing market*

- A low cost tool for refresh and restoration of high shines on polished concrete
- Works with a variety of densifiers to truly "POP" the shine - a must for Lithium densifier application
- Head weight and high speed increase floor temperature for optimum shine
- True, on-board active vacuum removes dust to 1 micron
- Built to meet LEED requirements
- Have the machine delivered now and take 6 months to pay with no fees or interest

Visit www.eaglefloorsolutions.com for more details!



**WORLD OF
CONCRETE®**
WORLD OF MASONRY | TECHNOLOGY FOR
CONSTRUCTION

hanley wood

Visit us indoors at booth #S20425
or come outside for product
demonstrations #O31446.



Eagle
Solutions

Learn more by contacting:
Eagle Solutions - 800.633.0519 or 770.773.3875
www.EagleFloorSolutions.com
email: customerservice@eaglefloorsolutions.com